

Modular Water treatment system

- ▶ Drinking water
- ▶ Seawater Desalination
- ▶ WWT Total Solution



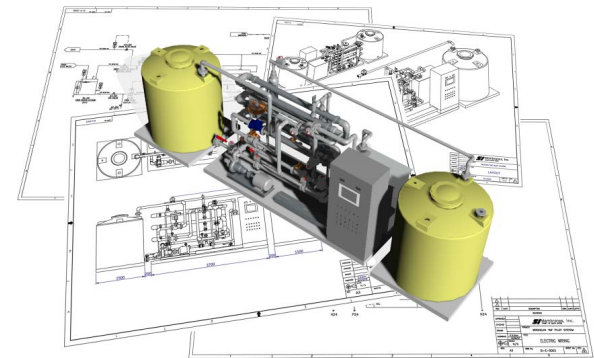
**Fresh Water !
Which is the source of the natural human life.**



Modular water treatment system

This is a Solution that focuses on the total water treatment system, HMI and PLC based control. Our company supplies design, engineering and manufacturing such as desalination, wastewater treatment solution and ultra-pure water system, comprehensively.

Water treatment solution & System engineering



Head Office of

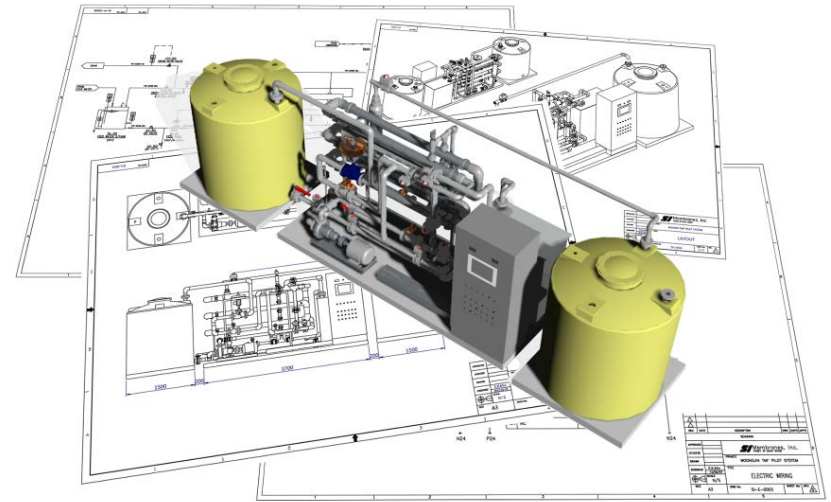


Factory of **KSYS** (Korea water treatment System for Your Satisfaction)

Head office and R&D center

Factory 3,300m²





System engineering

Business categories



- Based on WK E&C's Powerful construction capability, all of water treatment projects to be managed with safety.

- UF/RO System
- Wastewater Treatment System
- Desalinators for Marine vessels
- Mobilized Water Treatment System
- Pilot System for Institute
- Effective Maintenance parts
- Activated 3D Modeling
- PLC Based PID control
- HMI Based, Full Automatic Control



Registration and Patent



2017~
KSYS R&D Center
(Reg No. 2017113162)



2015
Design Patents
(Patent No. 30-0789387/9)



2014 - KICT Technical License
agreement(2016)
Cartridge water treatment system
(Patent No. 10-1394991/2)



KSYS Standard System

BWRO PACKAGE SYSTEM

Isolated area of rural
Construction site, Temporary water supply of
Hotel and resort, Island.
Emergency Drinking Water.

* BWRO (Brackish Water Reverse Osmosis)

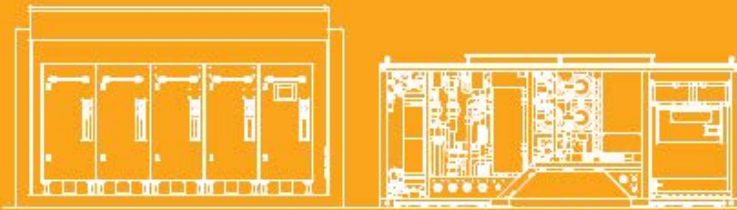


PACKAGE RO SYSTEM

KSYS MULTI PURPOSE WATER TREATMENTS SYSTEM



MULTI PURPOSE RO PACKAGE SYSTEM



MOBILIZED RO PACKAGE SYSTEM



KSYS

KSYS Head office
133, Jeongwangcheon-ro, Siheung-si, Gyeonggi-do, Korea 15107
T : +82-70-4911-9911 F : 82-31-434-9911
Homepage - <http://ksys.pro> Email - ksys@ksys.pro

BRACKISH WATER SYSTEM



Model	KBSP-010	KBSP-015	KBSP-020	KBSP-030H
Capacity (Liter/day)	10,000	15,000	20,000	30,000
Feed water source	Brackish water (borehole, municipal water, well, river, lake)			
Filtration Technology	Reverse Osmosis			
Product water quality	Potable water			
Feed flow rate (m3/hr)	1.5	1.6	1.8	2.2
Recovery (%)	28	39	46	58
Operating pressure (bar)	Feed 1~3, RO 7~10			
Power consumption (kW)	1.8	2.0	2.2	2.5
Control type	HMI, PLC Fully automatic operation			
Feed water temp. (°C)	4 ~ 40			
Ambient air temp. (°C)	10 ~ 50			
Weight (kg)	250	270	290	340
Size (W x B x H mm)	770 x 800 x 1800		1400 x 800 x 1550	

SEA WATER SYSTEM



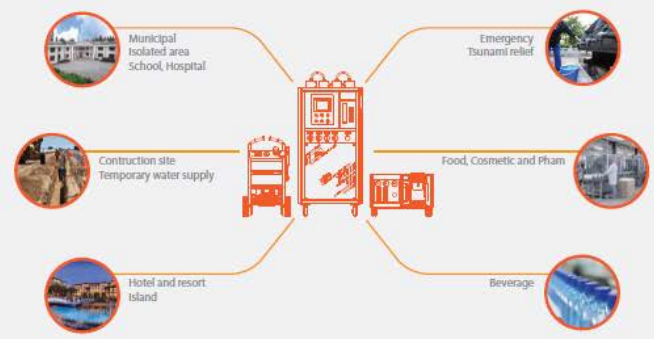
Model	KSSP-005/H	KSSP-010H	KSSP-015H
Capacity (Liter/day)	5,000	10,000	15,000
Feed water source	Seawater		
Filtration Technology	Reverse Osmosis		
Product water quality	Potable water		
Feed flow rate (m3/hr)	0.6	1.4	1.6
Recovery (%)	38	30	40
Operating pressure (bar)	Feed 1~3, RO 50~60		
Power consumption (kW)	1.5	4.8	6.5
Control type	PCB auto control	HMI, PLC Fully automatic operation	
Feed water temp. (°C)	4 ~ 32		
Ambient air temp. (°C)	10 ~ 50		
Weight (kg)	130	410	460
Size (W x B x H mm)	660 x 580 x 1400 1200 x 470 x 630(H type)	1400 x 800 x 1600	

EMERGENCY & SPECIAL



Model	KBEP-0015M	KSEP-0015E
Capacity (Liter/day)	1,500	1,500
Feed water source	Brackish water	Seawater
Filtration Technology	Reverse Osmosis	
Product water quality	Potable water	
Feed flow rate (m3/hr)	0.35	0.24
Recovery (%)	20	30
Operating pressure (bar)	7~10	50~60
Power consumption (kW)	0.75	1.1
Control type	Manual operation	
Feed water temp. (°C)	4 ~ 40	4 ~ 32
Ambient air temp. (°C)	10 ~ 50	10 ~ 50
Weight (kg)	50	55
Size (W x B x H mm)	570 x 750 x 950	760 x 710 x 510

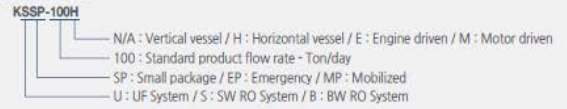
APPLICATION



OPTION ITEM



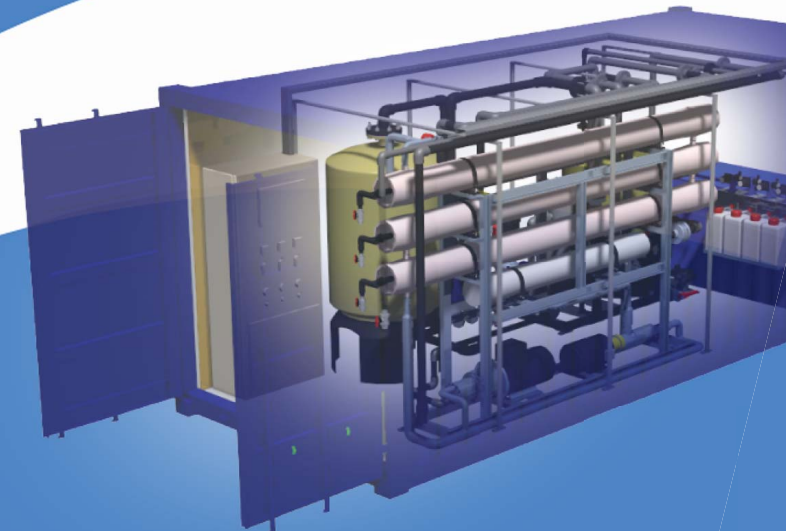
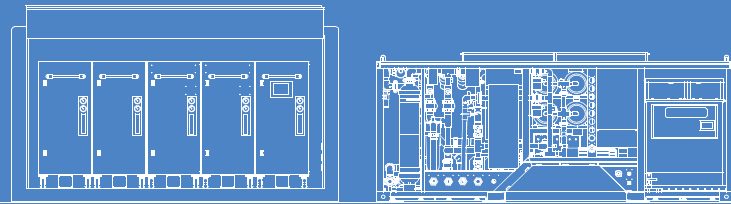
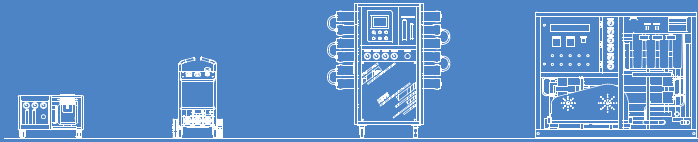
MODEL INFORMATION



* The specifications of product are subject to change without notice.

PACKAGE RO SYSTEM

KSYS MULTI PURPOSE WATER TREATMENTS SYSTEM



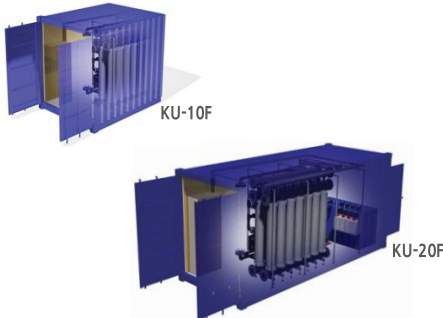
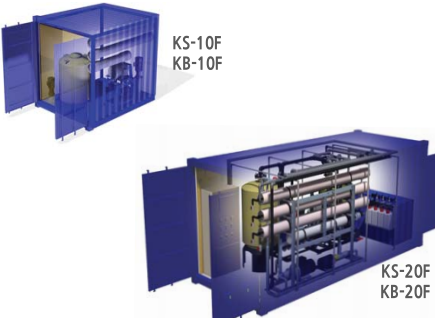
KSYS

Korea water treatment System for Your Satisfaction



WK E&C
WOOKYUNG E&C CO.,LTD.

SYSTEM SPECIFICATION

Model	KU-10F-200	KU-20F-500	KS-10F-50	KS-20F-100	KB-10F-120	KB-20F-250
Outline						
Capacity(m ³ /day)	200	500	50	100	120	250
Feed source	Seawater, well, river, lake		Seawater		Well, river, lake	
Product quality	Less than 1NTU, remove virus, bacteria		Less than 500ppm TDS			
Power consumption (kW)	normal 2.5 backwash 8.5	normal 4 backwash 19	16	23	6.5	12
Size(m)*	2.7 × 2.2 × 2.2	5.7 × 2.2 × 2.2	2.7 × 2.2 × 2.2	5.7 × 2.2 × 2.2	2.7 × 2.2 × 2.2	5.7 × 2.2 × 2.2
Weight(kg)	750	1,350	950	1,800	850	1,700
Membrane technology	Ultra filtration membrane		SW High rejection RO membrane		High productivity RO membrane	

- * The size and weight are the system only.
- * The system can be mounted ISO Standard container.

SYSTEM CONFIGURATION

- UF 200ton System single operation

KU-10F-200

- UF 200ton + SWRO 50ton system operation

KU-10F-200

KS-10F-50

- UF 500ton + BWRO 120ton X 2sets system operation

KU-20F-500

KB-10F-120

KB-10F-120

APPLICATION

- Municipal / Isolated area
- Hotel, Resort and School water supply
- Pilot system for Large plant
- Temporary water supply for Construction site
- Emergency, Tsunami relief

MODEL INFORMATION

KS-10F-100-CT

N/A : STANDARD / CT : CONTAINER / CV : CANVAS COVER

100 : PRODUCT FLOWRATE -m³/day

10F : For 10FT Container / 20F : 20FT

U : UF System / S : SW RO System / B : BW RO System

Seawater 35,000ppm TDS (25°C) / RO Recovery rate 10~40%
Surface water 3,000ppm TDS (25°C) / RO Recovery rate 50~70%
Main power source : 380 or 440VAC, 3Phase, 50/60Hz
Weight in Specification table is excluded container weight.

Screen Filter



- Max. working pressure : 10 bar
- Max. fluid temperature : 50°C
- Max. flow rate : 70 m³/h
- Pore size : 125 μm
- Screen material : Non-corrosive stainless steel
- Weight : 42 kg

▶ Filtration of fine particles using cartridges

UF Membrane



- Size : Ø 250 * 1,680 mm
- Max. operating pressure : 5 bar
- Max. operating temperature : 40°C
- Pore size : 0,02
- Membrane material : PESm
- Weight : 55 kg

▶ log 4 virus and log 6 bacteria removal

RO Membrane / Vessel



- Membrane size : Ø8 * 40 inch
- Membrane material : PA
- Max. operating pressure : 1,000psi
- Flow rate (each) : 57 m³/day
- Stabilized Salt rejection : 99,8%
- Stabilized Boron rejection : 41%

▶ Salt ion removal from seawater and surface water

Touch Panel / PLC



- TFT full color LCD touch screen
- Backlight LED, 50,000hr lifetime
- Certificate : CE, UL, KC
- High speed and large capable PLC control
- Maximized reliability
- K-PID Control applied

▶ Smart and Easy operation

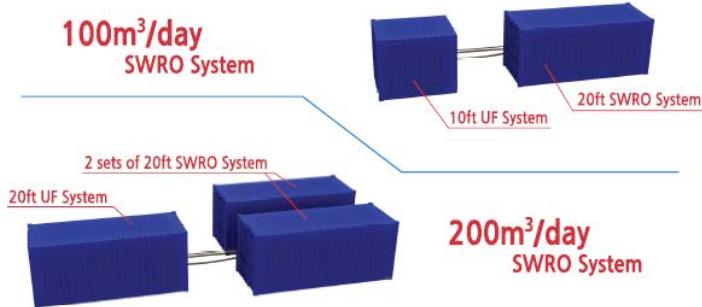
SWRO System configuration

Single system

- UF System 200, 500m³/day - OPTION
- SWRO System 50, 100m³/day

Full package system

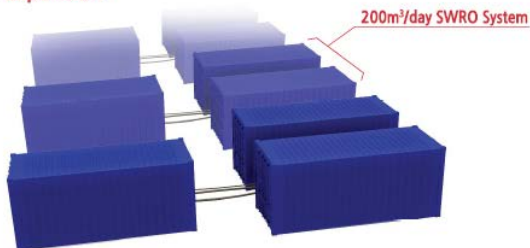
- SWRO System 100/200m³/day with UF Pretreatment system



Multiple full package system

- SWRO System 200/400/600m³/day and more!

Capacity expansion



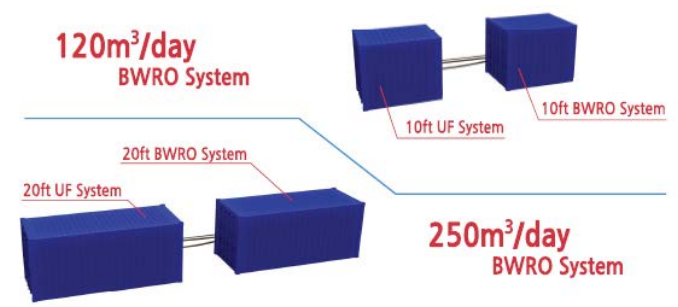
BWRO System configuration

Single system

- UF System 200, 500m³/day - OPTION
- BWRO System 120, 250m³/day

Full package system

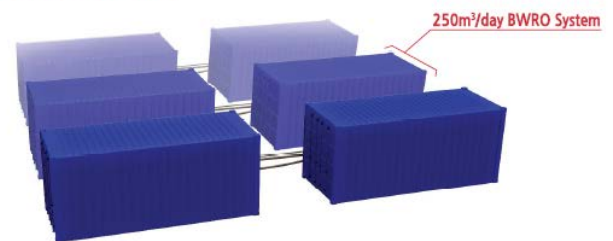
- BWRO System 120/250m³/day with UF Pretreatment system



Multiple full package system

- BWRO System 250/500/750m³/day and more!

Capacity expansion



RO Cassette

제품 특징

- 표준화 패키지 경치로 신속한 이동 및 설치 가능
- 최소 운영 인력 운전/유지관리
- 구성품 최적화되어 최소의 설치 공간 필요
- 검증된 부품으로 내구성 향상
- LCD 터치패널 적용으로 쉽고 편하게 운전 가능
- 인버터 구동방식으로 경제적인 운전 가능

주요 구성품

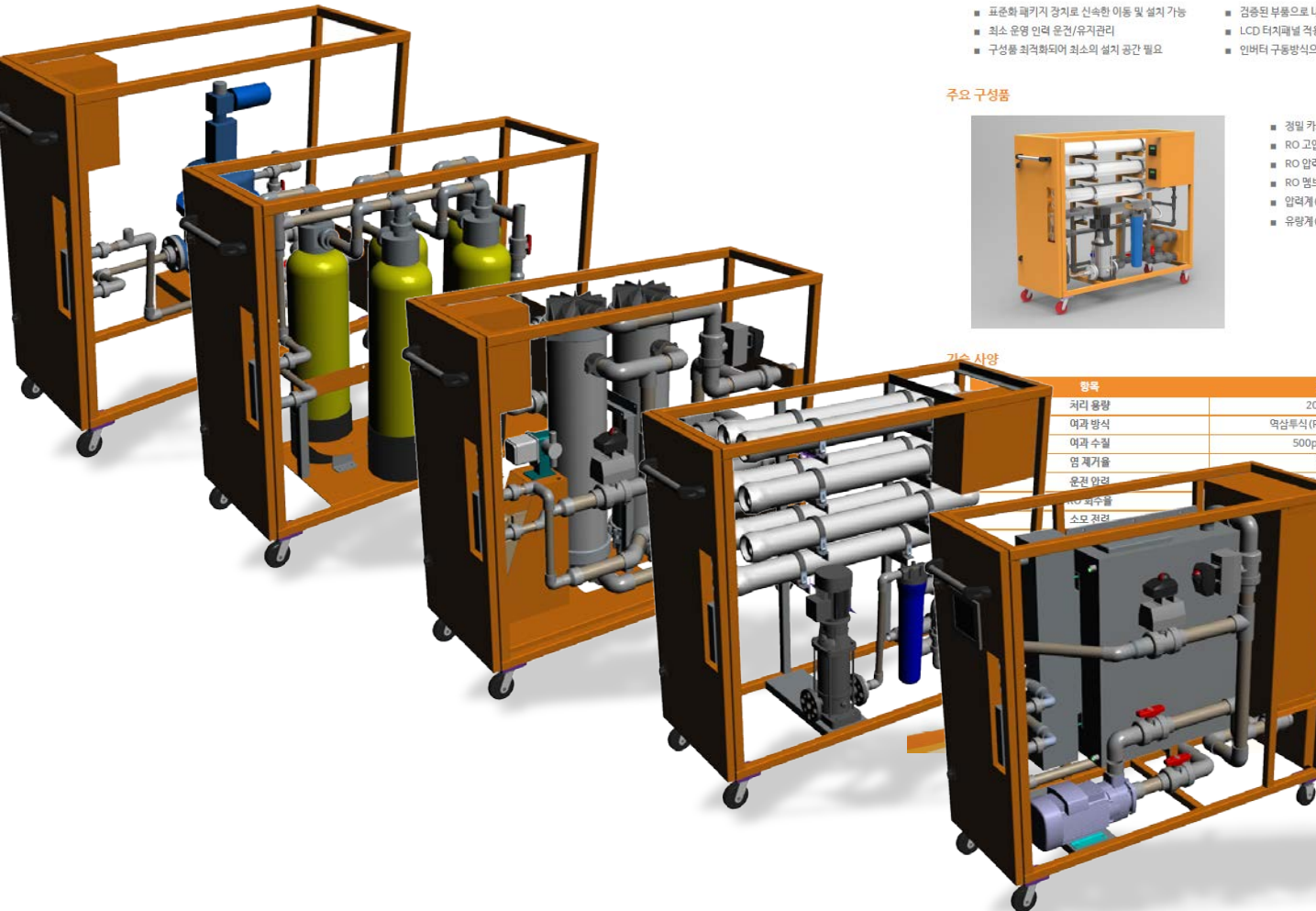


- 정밀 카트리리지 필터(5micron)
- RO 고압펌프 (Grundfos사)
- RO 압력용기
- RO 멤브레인 (CSM-RE4040-BLR)
- 압력계 (RO 입구 / RO 출구)
- 유량계 (RO 생산수)

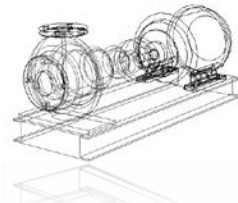
기술 사양

항목	기술사양
처리 용량	20~30톤/일
여과 방식	역삼투식 (Reverse Osmosis)
여과 수질	500ppm TDS 이하
염 제거율	99.6%
운전 인력	1명 (고압 8~10 BAR)
RO 제어방식	계수환 방식)
소모 전력	카세트 당) Kg 0 x 1,400

부분이 공정수 제조



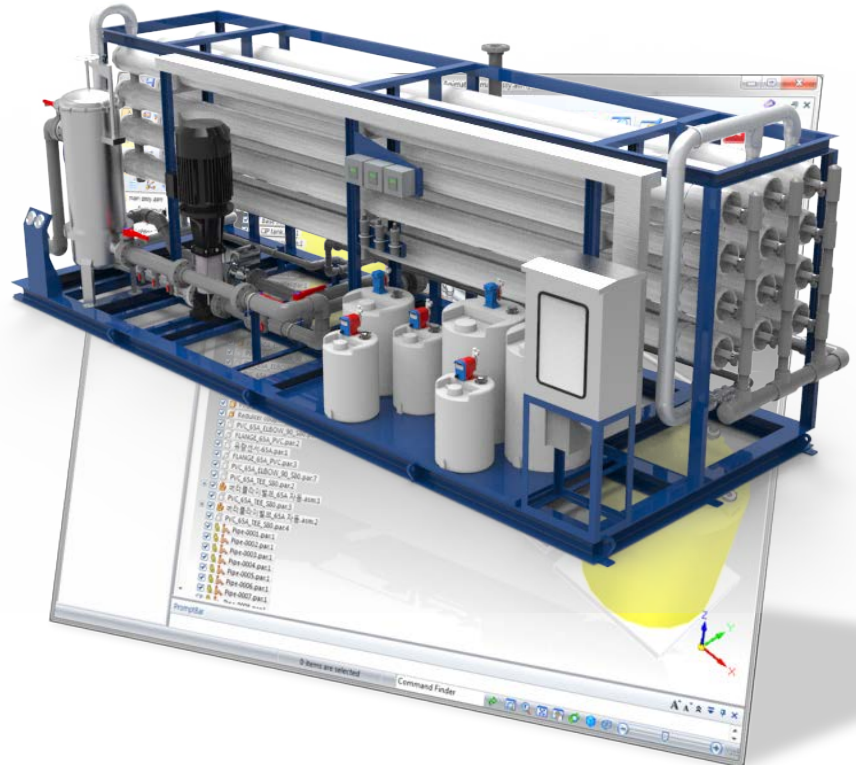
3D Modeling



Software : SolidEdge ST8

Cadian 2014

- 3D System modeling
- 3D Piping (Isometric Issue)
- BOM Issue Based on 3D modeling
- Optimization design without Loss
- Lower defect rate
- Lower cost Effects
- 3D Simulation Activating



PLANT 3D DESIGN VIEW



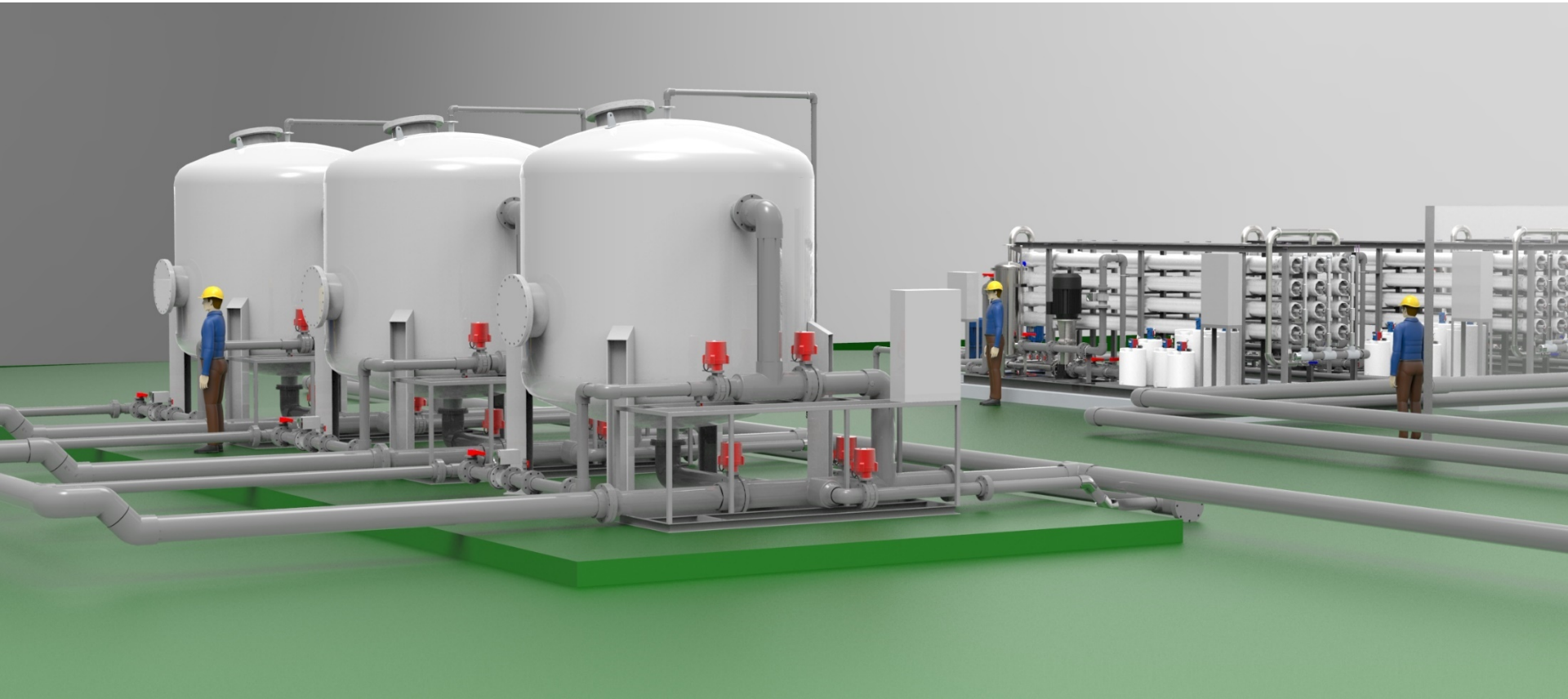
T PROJECT BWRO 3000TPD
Bird's eye view

PLANT 3D DESIGN VIEW



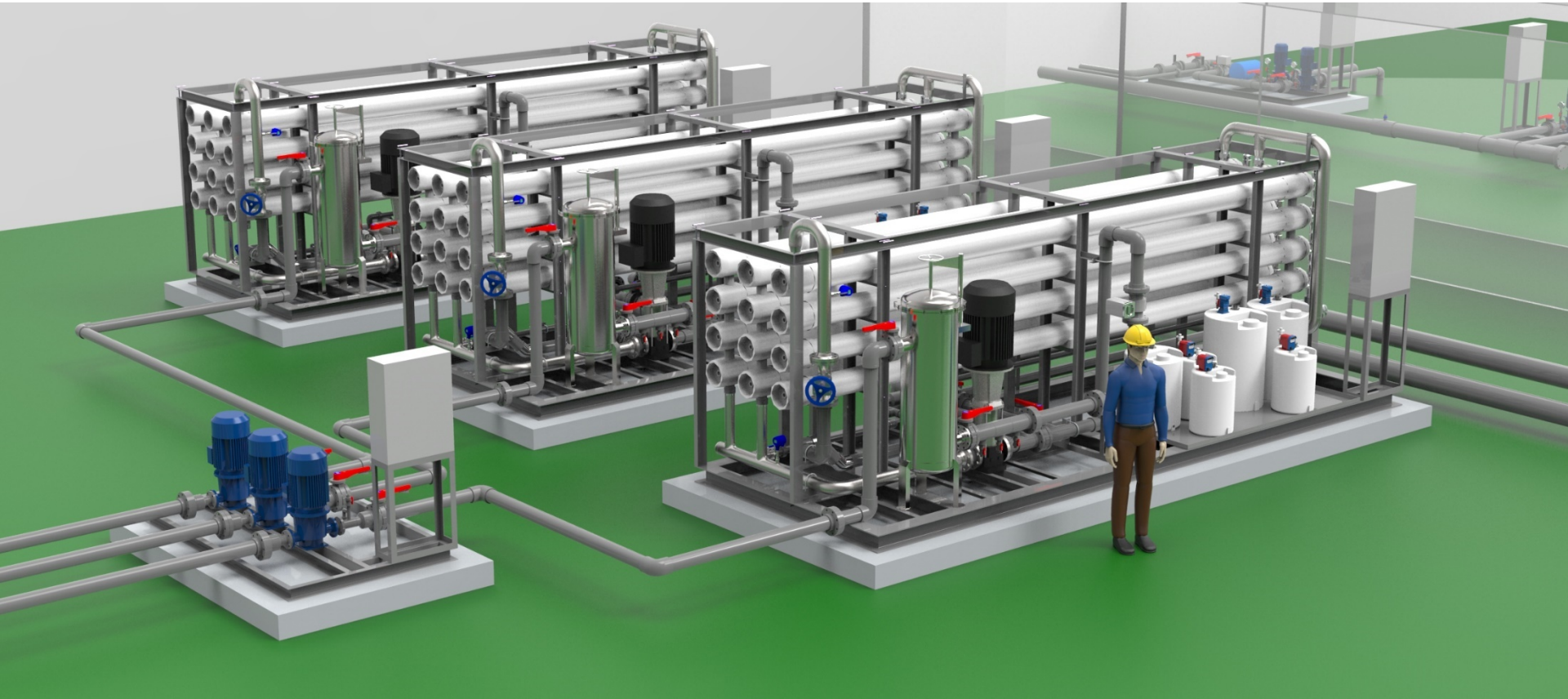
T PROJECT BWRO 3000TPD
Bird's eye view

PLANT 3D DESIGN VIEW



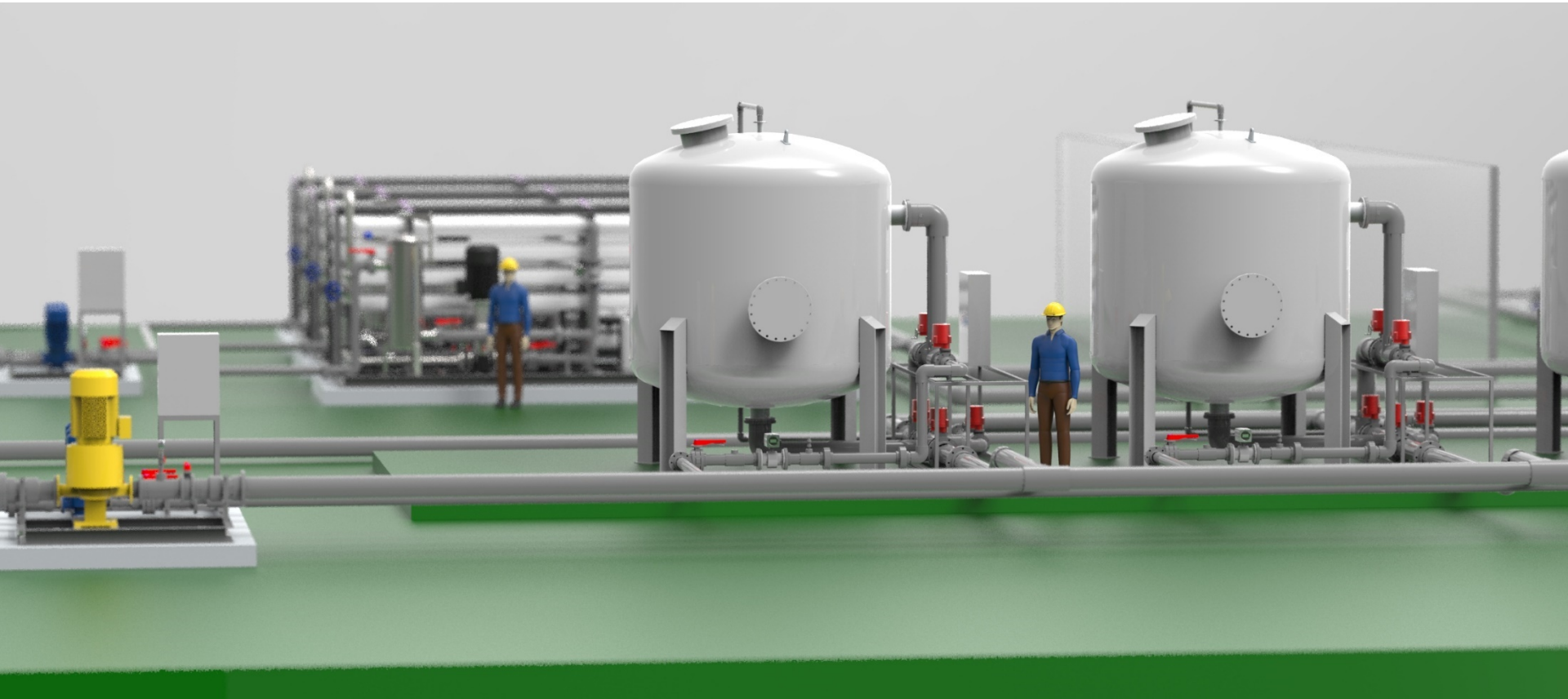
T PROJECT BWRO 3000TPD DMF VIEW

PLANT 3D DESIGN VIEW



T PROJECT BWRO 3000TPD RO VIEW

PLANT 3D DESIGN VIEW



T PROJECT BWRO 3000TPD DMF VIEW

Reference - BWRO System



BWRO SYSTEM

Drinking water supply

2,000 m³/day

Aug. 2017. / Bangladesh

* BWRO (Brackish Water Reverse Osmosis)

Reference - SWRO SYSTEM (Containerized)



SWRO SYSTEM (Containerized)

Drinking water supply
2,000 m³/day (500m³/day x 4 sets)
Aug. 2017. / Malaysia

* SWRO (SeaWater Reverse Osmosis)

Reference - SWRO SYSTEM VIEW



SWRO SYSTEM 2,000 m³/day

Reference - MOBILE UF SYSTEM



MOBILE UF SYSTEM
Emergency Water Treatment
500GPM (2700m³/day)
Jun. 2019. / Ulsan, Korea

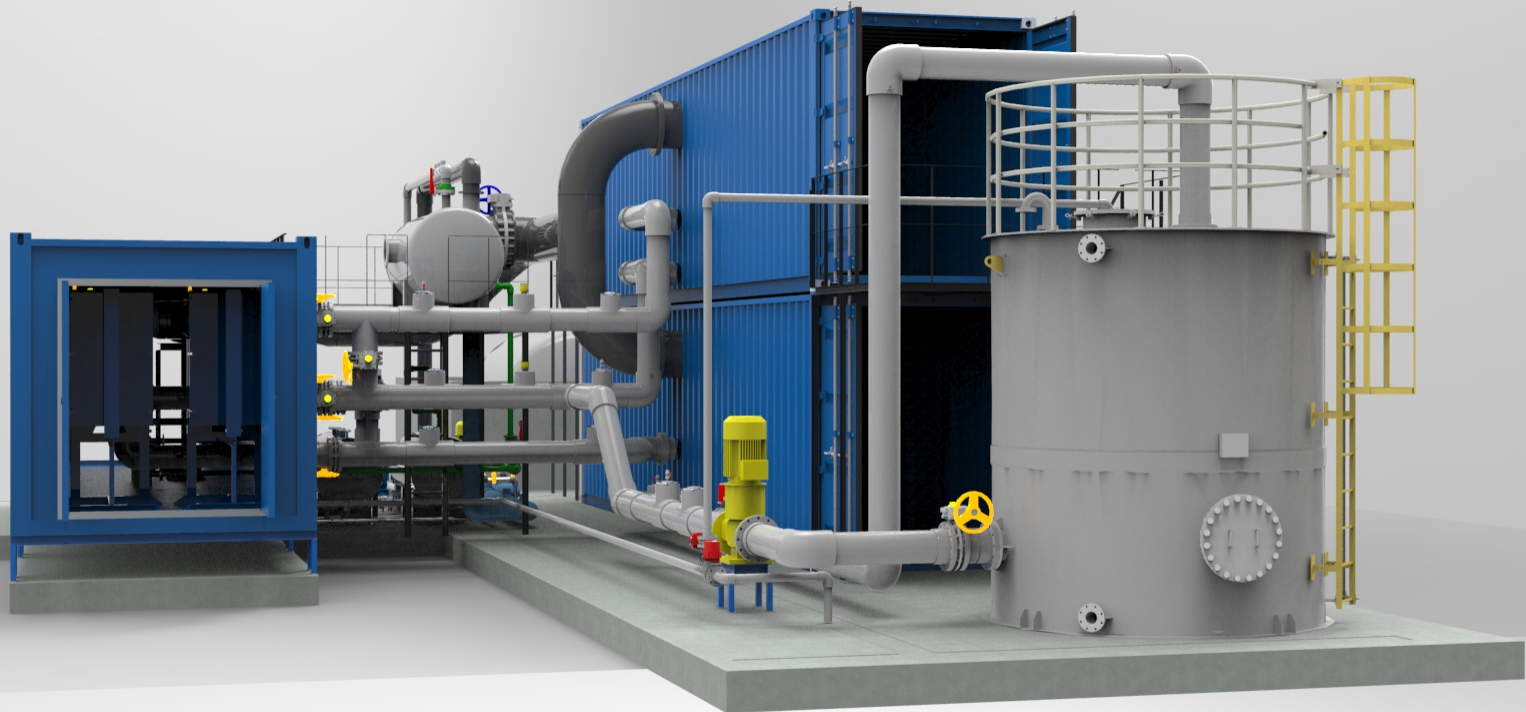
Reference - MOBILE SWRO SYSTEM



MOBILE SWRO SYSTEM

Drinking water supply from Seawater
60m³/day
May. 2019. / Yongin, Korea

PLANT 3D DESIGN FOR MD (Membrane Distillation System)



MD 200TPD

Reference for MD System



MD SYSTEM (Membrane Distillation)

Drinking water supply

200 m³/day

Jul. 2018. / Pusan, Korea

Reference for Multi-purpose Cartridge type System

**Multi-purpose Cartridge type
Water Treatment System**
MF / UF / RO Cartridge system
Emergency water supply
Small drinking water system
Aug. 2014. / KICT, Korea



Reference for Membrane Inspection System

Membrane Inspection System

Total MF/UF quality inspection system
for membrane manufacturer.
Mar. 2015. / Hangzhou, China



Reference for Variety Package Systems

Package SWRO System

Seawater RO long term pilot test system
Oct. 2011. / Daecheon, Korea

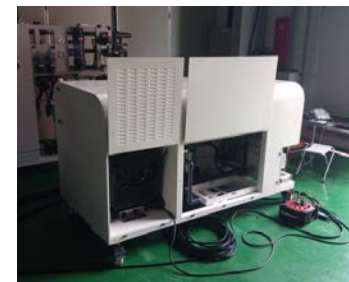


Mobilized UF/RO Package system

Emergency water supply
Small drinking water system
Sep. 2012. / Seoul, Korea

Mobilized BWRO System

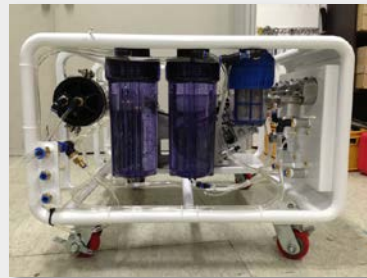
Emergency water supply
Small drinking water system
Jun. 2014. / Seoul, Korea



Reference for Variety Package Systems

UF System

Small drinking water system
Oct. 2013. / Cho-do, Korea
UF Membrane - inge GMBH(Germany)



Engine driven BWRO system
Emergency water supply
Des. 2011. / Seoul, Korea

Seawater Desalinator for Marine vessels

Drinking water supply
Aug. 2012. / Ulsan, Korea



Reference for Control and HMI Systems

**Li Concentration System
Control and HMI**
Mineral concentration system
Feb. 2013. / Chile



**MF/BWRO pilot plant
Control and HMI**
Water treatment pilot system
Oct. 2013. / Daegu, Korea

**MF/SWRO Pilot plant
Control / HMI**
Water treatment pilot system
Dec. 2011. / Seoul, Korea



Reference for Control and HMI Systems

BWRO System Control and HMI

BWRO system
Jan. 2014. / Iraq



SWRO plant Control / HMI
SWRO System
Aug. 2013. / Indonesia

SWRO System Control and HMI

SWRO system
Mar. 2013. / Livia



Reference for Control and HMI Systems

Ag Electro-refining Control and HMI
Metal electro-refining system
Nov. 2012. / Paju, Korea

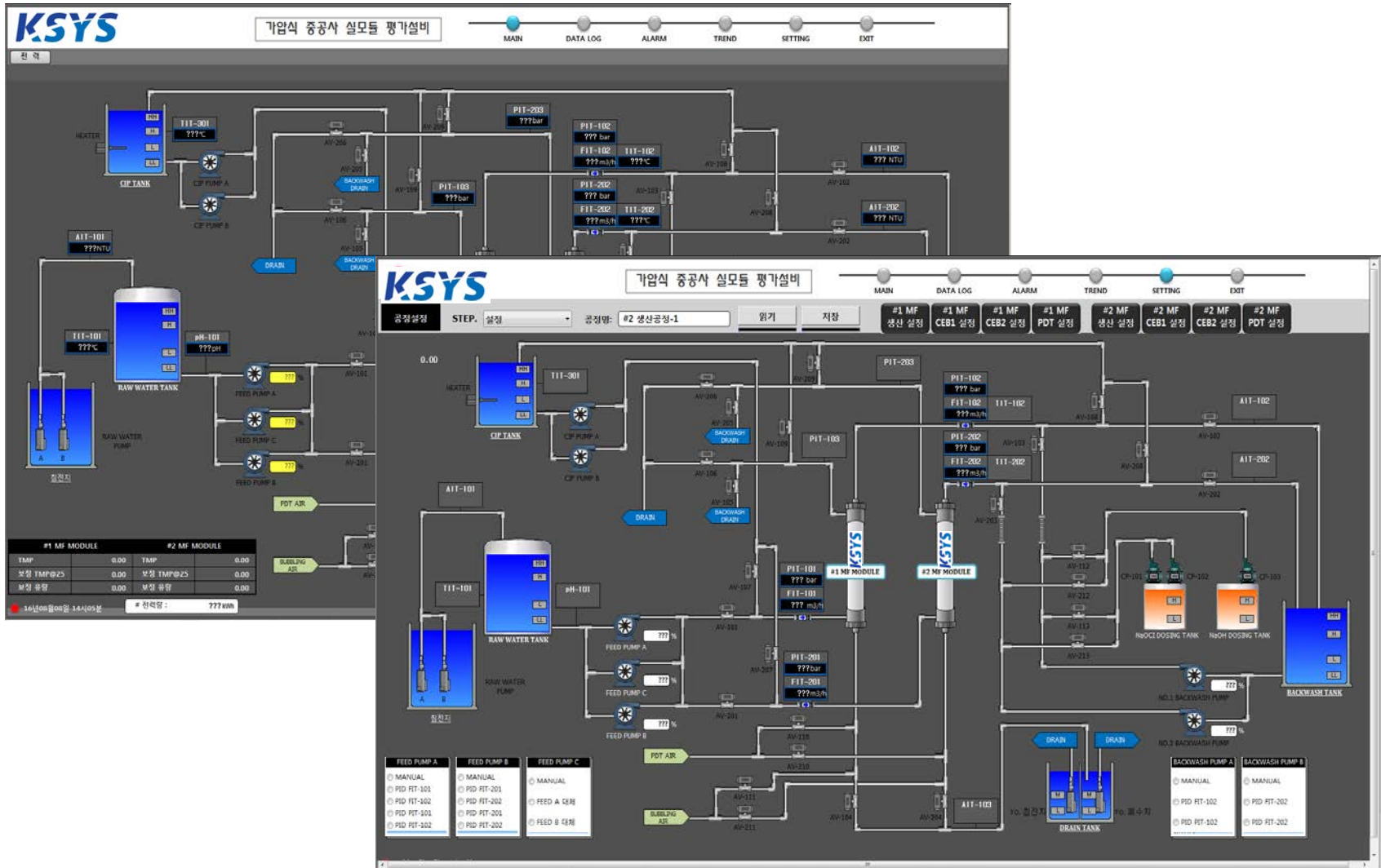


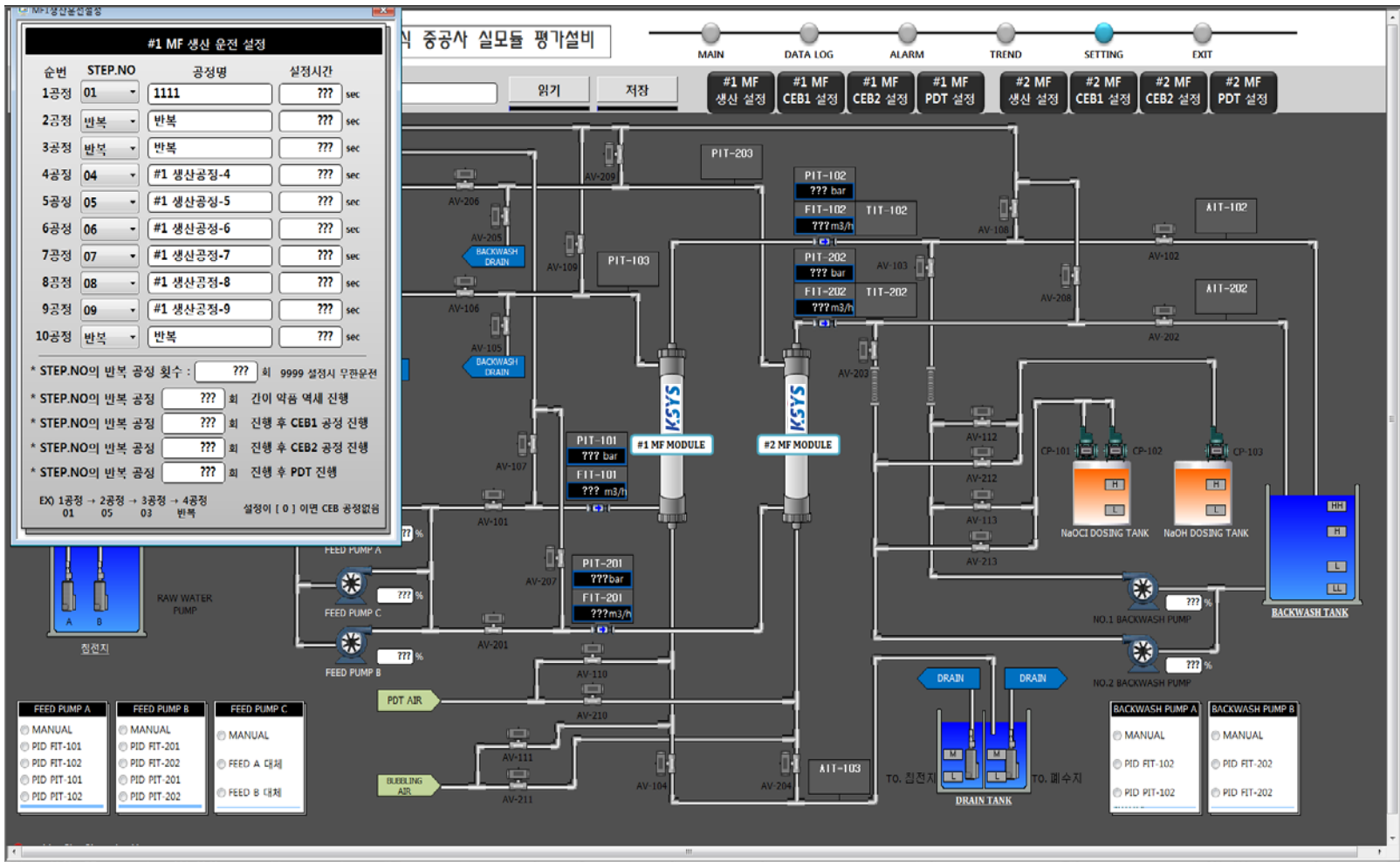
HH system Control panel
Helicopter Handling System
Sep. 2010. / Ulsan, Korea

MBR Pilot plant Control panel
Water treatment pilot system
Dec. 2011. / Osan, Korea



Reference for HMI Sample for MF Systems





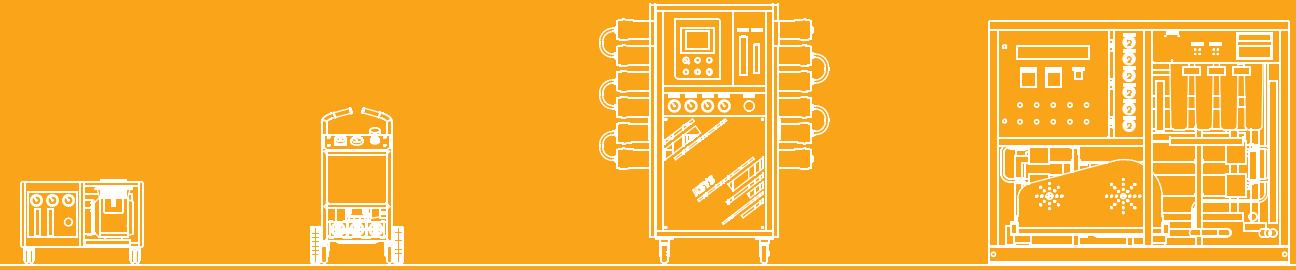
Reference for Pilot system

Pilot system for Institute MF / UF / RO / TMF pilot system

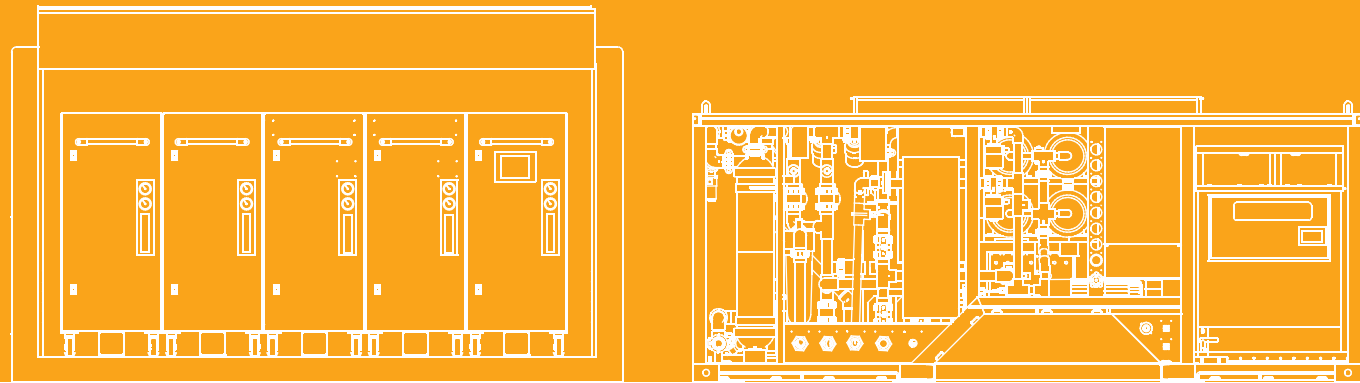


PACKAGE RO SYSTEM

KSYS MULTI PURPOSE WATER TREATMENTS SYSTEM



MULTI PURPOSE RO PACKAGE SYSTEM



MOBILIZED RO PACKAGE SYSTEM



KSYS

Korea water treatment System for Your Satisfaction

 **WK E&C**
WOOKYUNG E&C CO.,LTD.

6F, World-beater bldg., 13 Jeongja-ro, Bundang-gu, Seongnam-si, Gyeonggi-do, Republic of Korea

TEL. 82-31-713-7070 FAX. 82-31-713-6010

E-MAIL. wkcos@daum.net WEBSITE. <http://www.wkcos.com>

Specialized Features



Suitable for Users

Intuitive facility status & remote operation are possible.



Smart & Easy Control

Built in HMI Touch screen and PLC



Strong Performance

High efficiency pumps and VFD inverter applied



Certificated Membrane

NSF certified membrane filter applied



Safety Function

Protected by pressure switches & solenoid valves.



Standard Compliance

Use of KS, ANSI & CE certified pipe & electrical parts.



Space Efficient Design

Increase space utilization with optimized system design.



Mobility

Light weight and Large caster

Applications

Fresh drinking water supply
Municipal, Isolated area, School, Hospital



Temporary water supply
Construction site, Emergency, Tsunami relief



Pure water supply
Food, Cosmetic, Pharm, Beverage



Fresh water supply
Hotel, Resort, Island



Technical Specification

BRACKISH WATER SYSTEM



Model	KBSP-010 / Plus	KBSP-015 / Plus	KBSP-020 / Plus	KBSP-030H
Capacity (Liter/day)	10,000	15,000	20,000	30,000
Feed water source	Brackish water (borehole, municipal water, well, river, lake)			
Filtration Technology	Reverse Osmosis			
Product water quality	Potable water			
Feed flow rate (m ³ /hr)	1.5	1.6	1.8	2.2
Recovery (%)	*28	*39	*46	58
Operating pressure (bar)	Feed 1~3, RO 7~10			
Power consumption (kW)	1.8	2.0	2.2	2.5
Control type	HMI, PLC Fully automatic operation			
Feed water temp. (°C)	4 ~ 40			
Ambient air temp. (°C)	10 ~ 50			
Dry weight (kg)	200	220	240	290
Size (W x B x H mm)	770 x 800 x 1800			1400 x 800 x 1550

*The Plus model can raise recovery rate more than 50%.

SEA WATER SYSTEM



Model	KSSP-005	KSSP-010H	KSSP-015H
Capacity (Liter/day)	5,000	10,000	15,000
Feed water source	Seawater		
Filtration Technology	Reverse Osmosis		
Product water quality	Potable water		
Feed flow rate (m ³ /hr)	0.6	1.4	1.6
Recovery (%)	38	30	40
Operating pressure (bar)	Feed 1~3, RO 50~60		
Power consumption (kW)	1.5	4.8	6.5
Control type	HMI, PLC Fully automatic operation		
Feed water temp. (°C)	4 ~ 32		
Ambient air temp. (°C)	10 ~ 50		
Dry weight (kg)	180	410	460
Size (W x B x H mm)	660 x 650 x 1500	1400 x 850 x 1600	

High pressure Pump

- Multistage centrifugal pump(BW)
- Multiplex plunger pump(SW)
- High energy efficiency
- Material : Non-corrosive stainless steel
- Max. operating pressure : 10 bar(BW) / 55 bar(SW)



- ▶ High pressure supply for RO membrane

RO Membrane / Vessel

- Membrane size : Ø4 * 40 inch
- Membrane material : PA
- Vessel material : FRP
- Max. operating pressure : 600(BW) / 1000(SW) psi
- Flow rate (each) : 9.1(BW) / 4.5(SW) m³/day
- Stabilized Salt rejection : 99.5(BW) / 99.8(SW) %



- ▶ Ion removal from brackish water or seawater

Safety Device

- Feed water pressure abnormal
- High pressure abnormal
- Product pressure abnormal
- SPDT contact mechanism
- Operating temperature : max. 120°C



- ▶ Protect system from abnormal pressure condition

Cartridge Filter / Housing

- Filter size : Ø 65 * 500 mm
- Filter pore size : 10 µm
- Filter material : PP
- Housing material : PP
- Operating pressure : 2.0~3.0 bar (max. 8.8 bar)
- Capacity : 1.5 m³/h (max. 2.0 m³/h)



- ▶ Filtration of fine particles using cartridges

Carbon Filter / Housing

- Filter size : Ø 65 * 500 mm
- Reduce following contaminants: Chlorine, Bad taste & Odors, Turbidity, Herbicides, Pesticides, Volatile organic chemicals(VOCs)
- Operating pressure : 2.0~3.0 bar (max. 8.8 bar)
- Capacity : 1.5 m³/h (max. 2.0 m³/h)



- ▶ High dirt-Holding capacity

UV Sterilizer

- Flow rate : 32m³/day
- Connection size : 1/2"
- Lamp failure device equipped
- Accumulated timer equipped
- Lamp watts : 20W
- Chamber material : 304SS



- ▶ Disinfect product water

Touch Panel / PLC

- TFT full color LCD touch screen
- Backlight : LED, 50,000hr lifetime
- Certificate : CE, UL, KC
- High speed and large capable PLC control
- Maximized reliability
- K-PID Control applied(option)



- ▶ Smart and Easy operation

Appendix (Option items, Size information)

Option item



Generator

- Sound proof gasolin engine generator
- Output : 3kV, 5kV, 11kVA

- ▶ Reliable power supply

Portable TDS

- Accuracy : 2%
- Quick to test the TDS of water

- ▶ Portable light weight handheld TDS meter

Multi-media filter / Softner / AC filter

- Variable filter media available
- Automatic backwashing / regeneration

- ▶ High turbidity water filtering

Option item skid

- Filter housing / Chemical unit / Feed pump mountable
- One, two or three item free selectable

- ▶ Convenient mount for various option items

Solar Power

- Average daily energy harvest : 6 kWh
- Battery capacity @ 20hr rate : 627AH @ 24VDC

- ▶ Clean and silent energy supply

Feed pump

- Multistage centrifugal pump
- High energy efficiency

- ▶ Stable supply feed water

Chemical dosing unit

- Anti-scalant / PAC / Chloine
- Diaphragm pump / PE tank

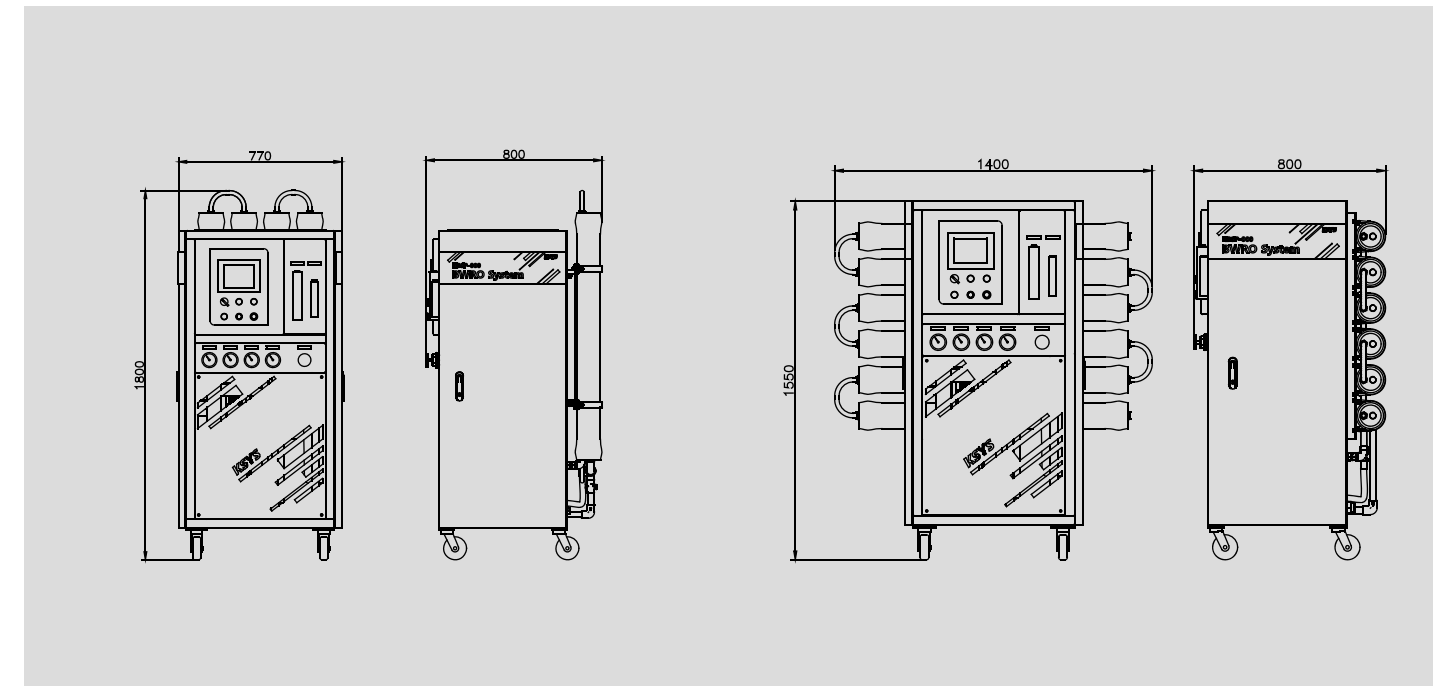
- ▶ Chemical dosing to feed or product water

Salinity sensor / Controller (premium)

- High accuracy and repeatability
- LCD Backlit display contoller

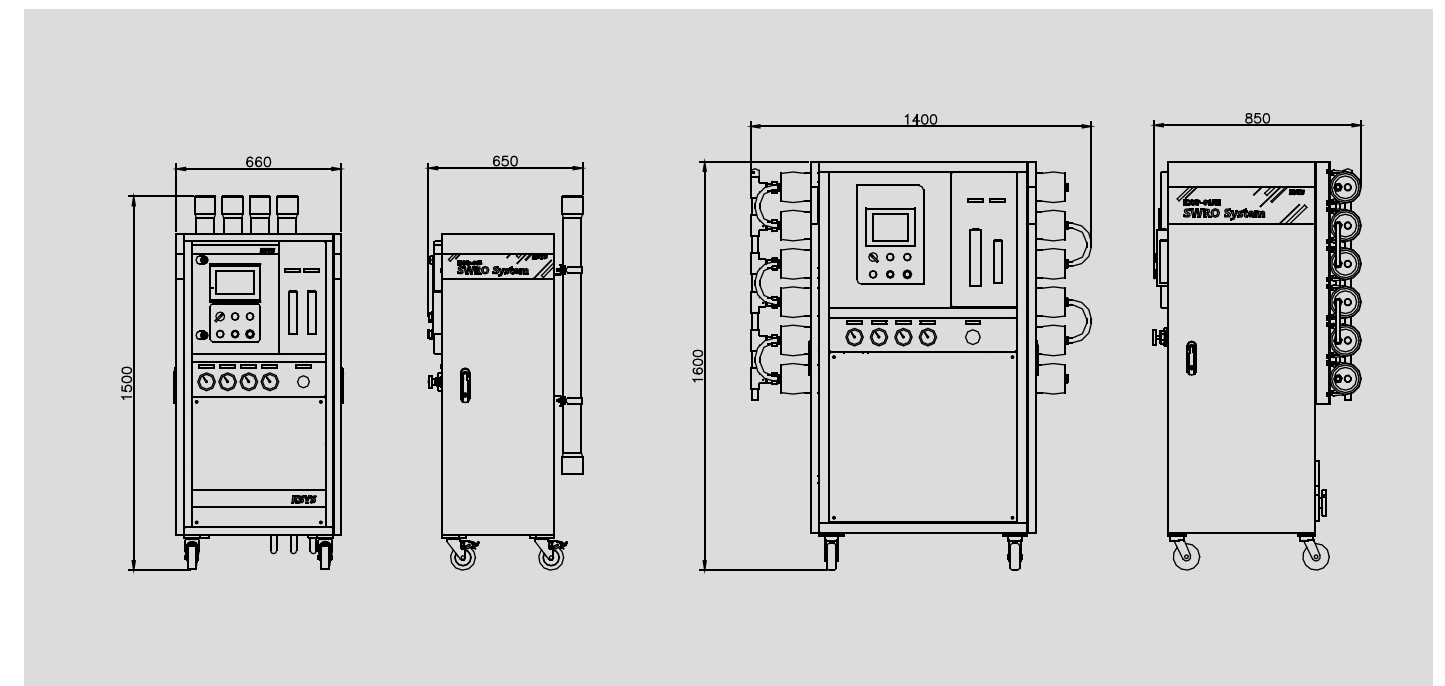
- ▶ Measuring and display of product water quality

Size Information



KBSP-010 / KBSP-015 / KBSP-020

KBSP-030H



KSSP-050

KSSP-010H / 015H

Appendix (Connect Infomation, Certifications)

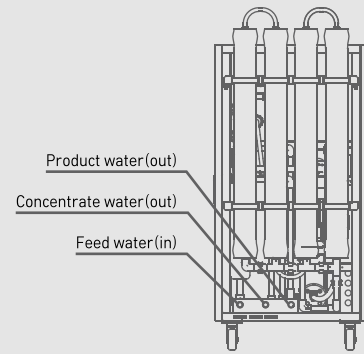
Connect Infomation

KBSP-010 / KBSP-015 / KBSP-020

- Feed water(out) 3/4" / 20A Female pipe thread
- Concentrate water(out) 3/4" / 20A Female pipe thread
- Product water(out) 3/4" / 20A Female pipe thread

KBSP-030H

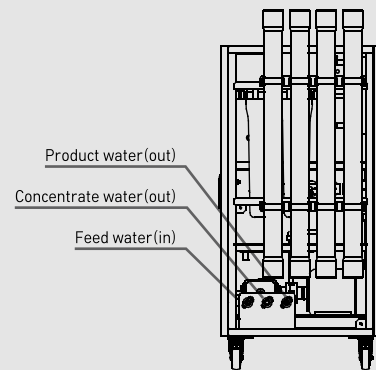
- Feed water(out) 1" / 25A Female pipe thread
- Concentrate water(out) 1" / 25A Female pipe thread
- Product water(out) 1" / 25A Female pipe thread



* Flange connection option available

KSSP-005

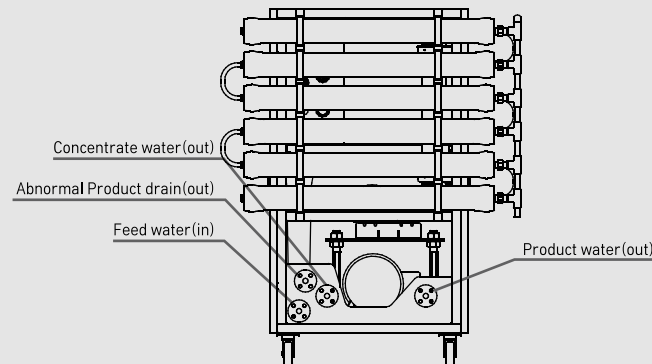
- Feed water(out) 3/4" / 20A Female pipe thread
- Concentrate water(out) 3/4" / 20A Female pipe thread
- Product water(out) 3/4" / 20A Female pipe thread



* Flange connection option available

KSSP-010H / KBSP-015H

- Feed water(out) 3/4" / 20A ANSI FLANGE
- Concentrate water(out) 3/4" / 20A ANSI FLANGE
- Product water(out) 3/4" / 20A ANSI FLANGE



* Socket connection option available

Component Certifications

High pressure pump (Grundfos)

- EN 10204 3.1 C
- LRS, DNV, GL, BV, ABS, RINA, CCS, RS, BKI, USCG, NKK

High pressure pump (Cat pumps)

- ATEX Compliant

RO Membrane (Toray chemical)

- NSF (National Science Foundation)
- ANSI standard 61

RO Vessel (ROPV)

- ASME

Conductivity meter (GF Signet)

- CE, UL, RoHS

HMI Touch panel, PLC (LS IS)

- CE, UL, KC
- ABS, DNV, LRS, BV, NK
- RINA, GL, CCS, KR

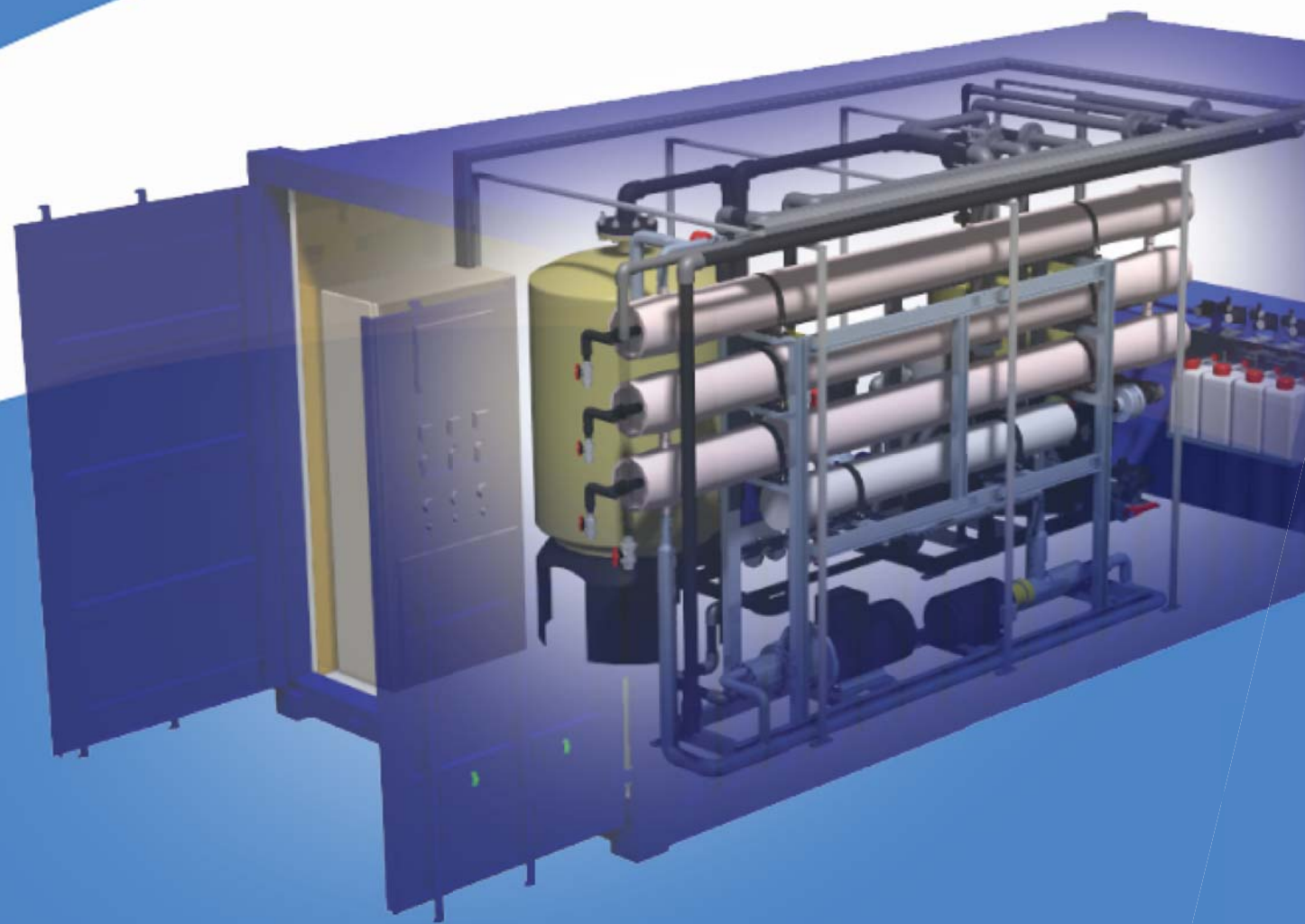
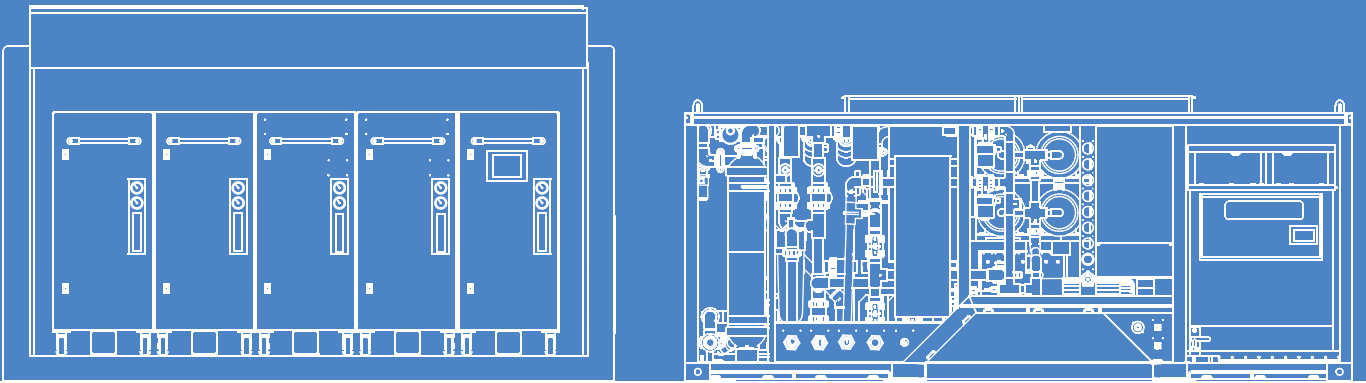
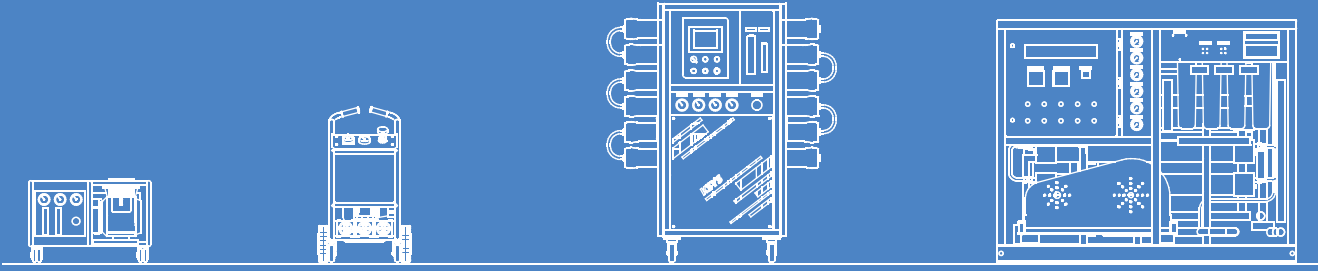


Company Certifications



PACKAGE RO SYSTEM

KSYS MULTI PURPOSE WATER TREATMENTS SYSTEM



KSYS

Korea water treatment System for Your Satisfaction

 **WK E&C**
WOOKYUNG E&C CO.,LTD.

6F, World-beater bldg., 13 Jeongja-ro, Bundang-gu, Seongnam-si, Gyeonggi-do, Republic of Korea

Specialized Features



Suitable for Users

Intuitive facility status & remote operation are possible.



Smart & Easy Control

Built in HMI Touch screen and PLC



Strong Performance

High efficiency pumps and inverters were used.



Certificated Membrane

Application of NSF certified membrane filter.



Safety Function

Protected by pressure switches & solenoid valves.



Standard Compliance

Use of KS & CE certified pipe & electrical parts.



Space Efficient Design

Increase space utilization with efficient system design.



Mobility

ISO Standard transportation

Fresh drinking water supply

Municipal, Isolated area, School, Hospital



Temporary water supply

Construction site, Emergency, Tsunami relief

Pure water supply

Food, Cosmetic, Pham, Beverage

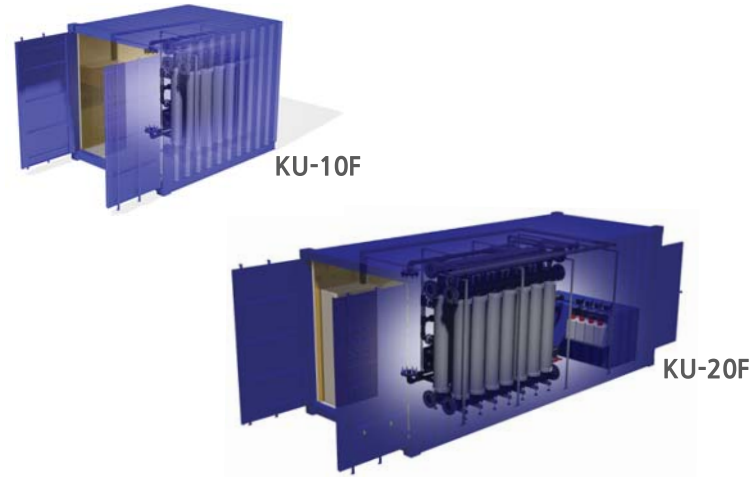
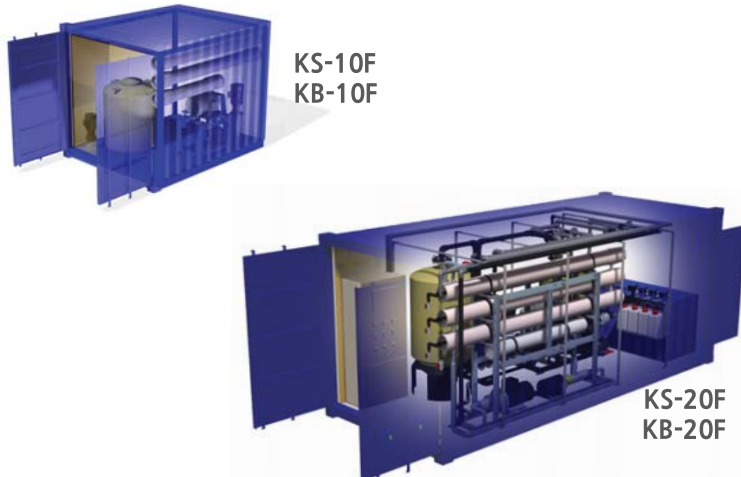


Fresh water supply

Hotel, Resort, Island

Technical Specification

SYSTEM SPECIFICATION

Model	KU-10F-200	KU-20F-500	KS-10F-50	KS-20F-100	KB-10F-120	KB-20F-250
Outline						
Capacity(m ³ /day)	200	500	50	100	120	250
Feed source	Seawater, well, river, lake		Seawater		Well, river, lake	
Product quality	Less than 1NTU, remove virus, bacteria		Less than 500ppm TDS			
Power consumption (kW)	normal 2.5 backwash 8.5	normal 4 backwash 19	16	23	6.5	12
Size(m)*	2.7 × 2.2 × 2.2	5.7 × 2.2 × 2.2	2.7 × 2.2 × 2.2	5.7 × 2.2 × 2.2	2.7 × 2.2 × 2.2	5.7 × 2.2 × 2.2
Weight(kg)	750	1,350	950	1,800	850	1,700
Membrane technology	Ultra filtration membrane		SW High rejection RO membrane		High productivity RO membrane	

- * The size and weight are the system only.
- * The system can be mounted ISO Standard container.

SYSTEM CONFIGURATION

- UF 200ton System single operation

KU-10F-200

- UF 200ton + SWRO 50ton system operation

KU-10F-200

KS-10F-50

- UF 500ton + BWRO 120ton X 2sets system operation

KU-20F-500

KB-10F-120

KB-10F-120

APPLICATION

- Municipal / Isolated area
- Hotel, Resort and School water supply
- Pilot system for Large plant
- Temporary water supply for Construction site
- Emergency, Tsunami relief

MODEL INFORMATION

KS-10F-100-CT

- N/A : STANDARD / CT : CONTAINER / CV : CANVAS COVER
- 100 : PRODUCT FLOWRATE -m³/day
- 10F : For 10FT Container / 20F : 20FT
- U : UF System / S : SW RO System / B : BW RO System

Seawater 35,000ppm TDS (25°C) / RO Recovery rate 10~40%
 Surface water 3,000ppm TDS (25°C) / RO Recovery rate 50~70%
 Main power source : 380 or 440VAC, 3Phase, 50/60Hz
 Weight in Specification table is excluded container weight.

Screen Filter



- Max. working pressure : 10 bar
- Max. fluid temperature : 50°C
- Max. flow rate : 70 m³/h
- Pore size : 125 μm
- Screen material : Non-corrosive stainless steel
- Weight : 42 kg

▶ Filtration of fine particles using cartridges

UF Membrane



- Size : Ø 250 * 1,680 mm
- Max. operating pressure : 5 bar
- Max. operating temperature : 40°C
- Pore size : 0.02
- Membrane material : PESm
- Weight : 55 kg

▶ log 4 virus and log 6 bacteria removal

RO Membrane / Vessel



- Membrane size : Ø8 * 40 inch
- Membrane material : PA
- Max. operating pressure : 1,000psi
- Flow rate (each) : 57 m³/day
- Stabilized Salt rejection : 99.8%
- Stabilized Boron rejection : 41%

▶ Salt ion removal from seawater and surface water

Touch Panel / PLC

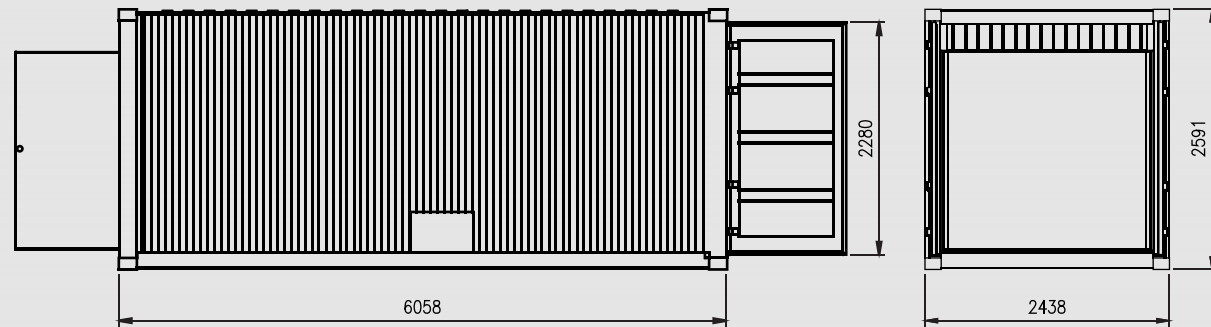


- TFT full color LCD touch screen
- Backlight LED, 50,000hr lifetime
- Certificate : CE, UL, KC
- High speed and large capable PLC control
- Maximized reliability
- K-PID Control applied

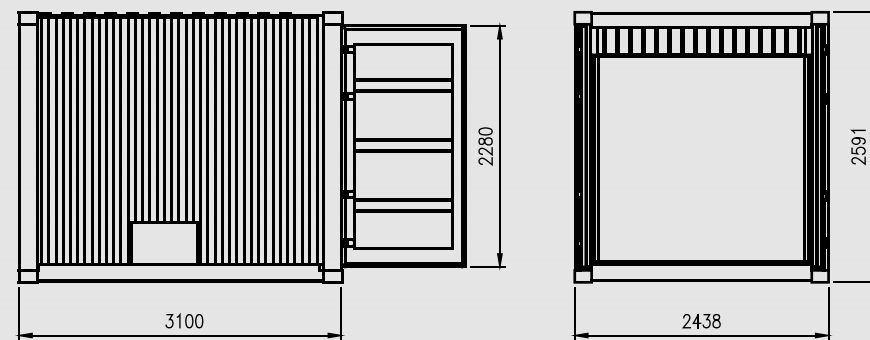
▶ Smart and Easy operation

Appendix

SIZE INFORMATION



KU-20F-500 / KS-20F-100 / KB-20F-250



KU-10F-200 / KS-10F-50 / KB-10F-120

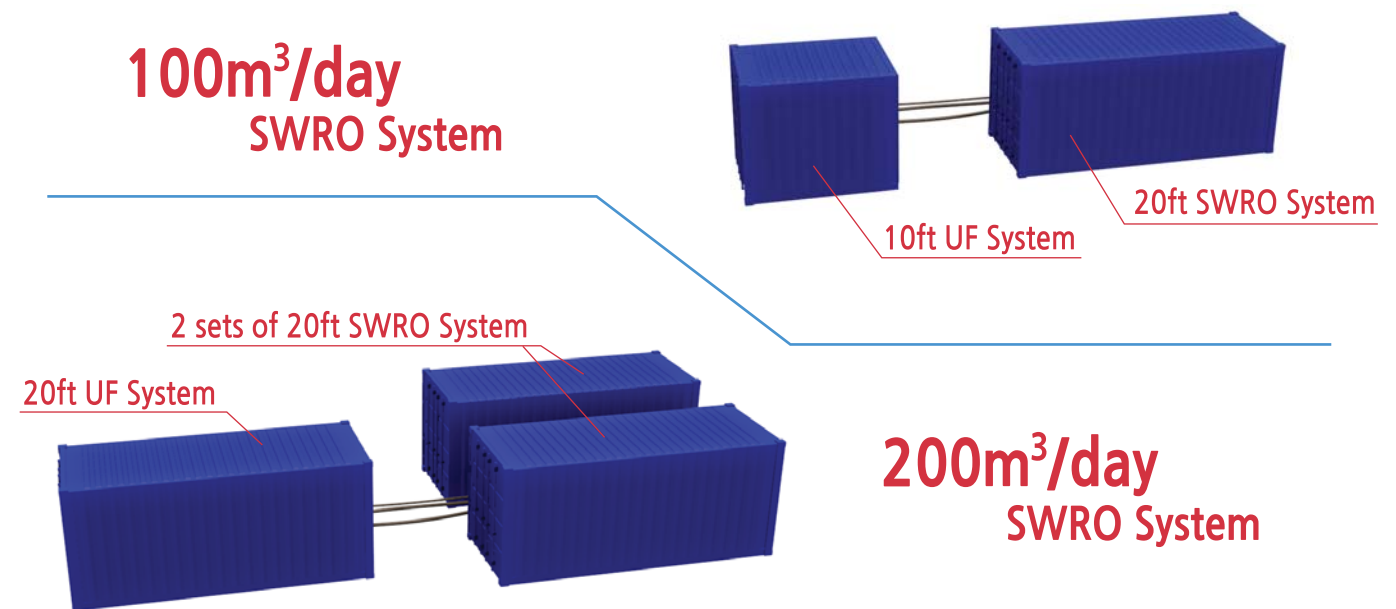
SYSTEM CONFIGURATION

Single system

- UF System 200, 500m³/day - OPTION
- SWRO System 50, 100m³/day

Full package system

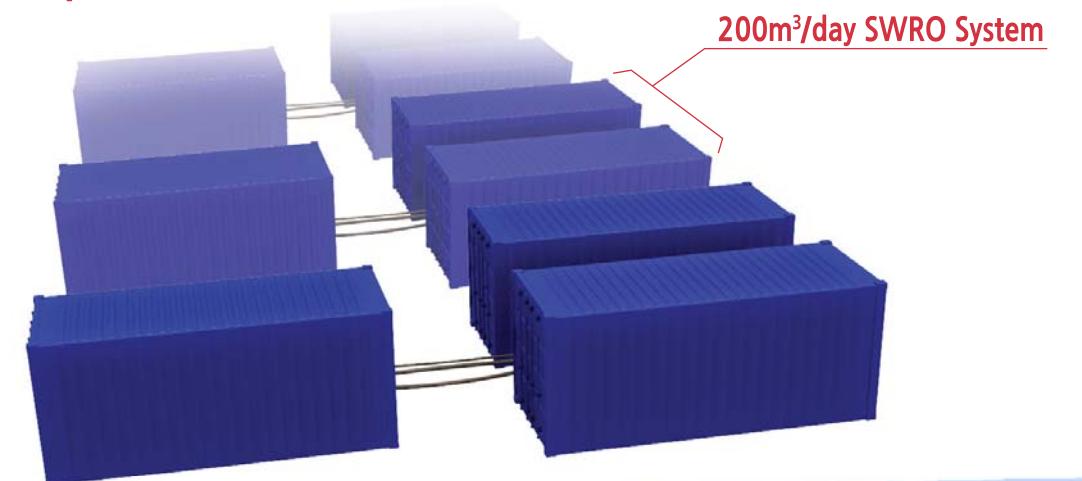
- SWRO System 100/200m³/day with UF Pretreatment system



Multiple full package system

- SWRO System 200/400/600m³/day and more!

Capacity expansion



Fresh Water !
Which is the source of the natural human life.



6F, World-beater bldg., 13 Jeongja-ro, Bundang-gu, Seongnam-si, Gyeonggi-do, Republic of Korea

TEL. 82-31-713-7070 FAX. 82-31-713-6010

WEBSITE. <http://www.wkcos.com> E-MAIL. wkcos@daum.net